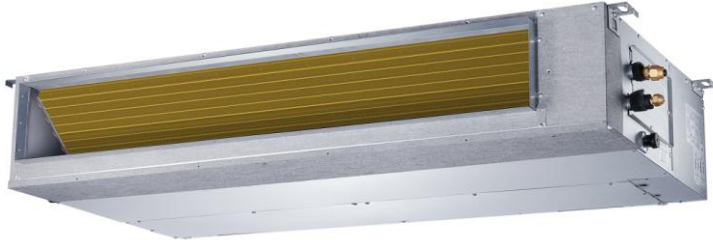


MULTI SPLIT

MULTI ZONE DUCT INDOOR UNIT

Model: LMHB12DFI



Item	Unit	Parameter
Model	—	LMHB12DFI
Performance		
Rated Cooling Capacity (Range)	Btu/h	12000(2250~14400)
EER	Btu/w	13
SEER	Btu/w	21.5
Rated Heating Capacity (Range)	Btu/h	12000(1800~16300)
COP	W/W	3.52
HSPF4	Btu/w	11.5
Electrical Data		
Normal Operational Voltage	V, Ph, Hz	208/230, 1, 60
Voltage Range	V	187-253
MCA	A	3
MOP	A	15
Indoor fan motor		
Type	—	Cross-Flow
Model	—	ZKFN-55-8-22-1
Qty	—	1
Input	W	130
Speed(Hi/Mi/Lo)	r/min	1170/1030/850
Air flow & Noise level		
Indoor air flow (Hi/Med/Lo) (No duct)	CFM	600/480/300
Indoor noise level (Hi/Med/Lo)	dB(A)	40/31.5/26.5
Dimension & Weight		
Dimension (W×D×H)	inch	27.56×19.92×7.87
	mm	700/506/200
Packing(W×D×H)	inch	33.86×21.26×11.22
	mm	860/540/285
Net/Gross weight	lbs.	39.24/48.5
	kg	17.7/21.9
Others		
Liquid side/ Gas side	inch	1/4" / 1/2"
	mm	6.35/12.7
Application area	sq.ft	172.22 ~ 247.57
	m2	16 ~ 23

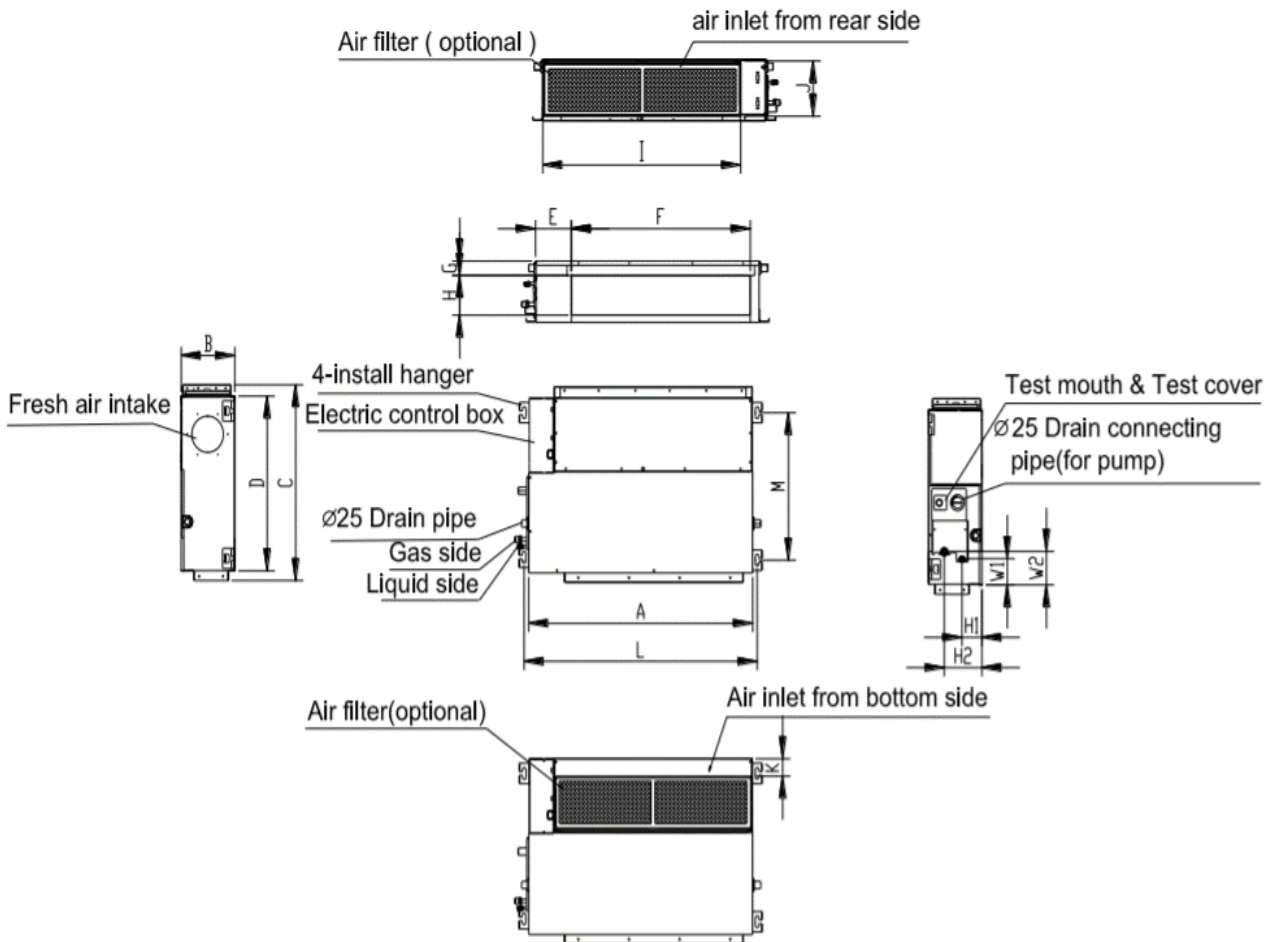
Job Name:

Schedule Reference:

Date:

Specification are subject to change without notice.

Outline and Physical Dimensions of LMHB12DFI



Model	A (mm/inch)	B (mm/inch)	C (mm/inch)	D (mm/inch)	E (mm/inch)	F (mm/inch)	G (mm/inch)	H (mm/inch)	I (mm/inch)
	700/27.6	200/7.9	506/19.9	450/17.7	137/5.4	537/21.1	30/1.2	152/6	599/23.6
LMHB12DFI	J (mm/inch)	K (mm/inch)	L (mm/inch)	M (mm/inch)	H1 (mm/inch)	H2 (mm/inch)	W1 (mm/inch)	W2 (mm/inch)	
	186/7.3	50/2	741/29.2	360/14.2	84/3.3	140/5.5	84/3.3	84/3.3	

