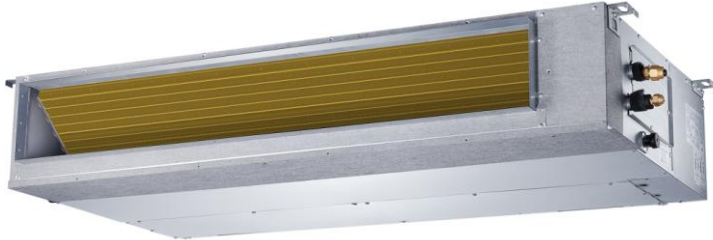


MULTI SPLIT

MULTI ZONE DUCT INDOOR UNIT

Model: LMHB18DFI



Item	Unit	Parameter
Model	—	LMHB18DFI
Performance		
Rated Cooling Capacity (Range)	Btu/h	16500(6500~18800)
EER	Btu/w	12.5
SEER	Btu/w	19.6
Rated Heating Capacity (Range)	Btu/h	19000(8900~22000)
COP	W/W	2.93
HSPF4	Btu/w	11
Electrical Data		
Normal Operational Voltage	V, Ph, Hz	208/230, 1, 60
Voltage Range	V	187-253
MCA	A	3
MOP	A	15
Indoor fan motor		
Type	—	Cross-Flow
Model	—	ZKFN-160-8-1-2
Qty	—	1
Input	W	90
Speed(Hi/Mi/Lo)	r/min	850/700/450
Air flow & Noise level		
Indoor air flow (Hi/Med/Lo) (No duct)	CFM	900/765/630
Indoor noise level (Hi/Med/Lo)	dB(A)	40/37.5/35
Dimension & Weight		
Dimension (W×D×H)	inch	34.65×28.53×8.27
	mm	880×674×210
Packing(W×D×H)	inch	42.13×28.53×11.02
	mm	1070×725×280
Net/Gross weight	lbs.	55.34/67.02
	kg	25.1/30.4
Others		
Liquid side/ Gas side	inch	1/4" / 1/2"
	mm	6.35/12.7
Application area	sq.ft	236.81 ~ 344.44
	m2	22 ~ 32

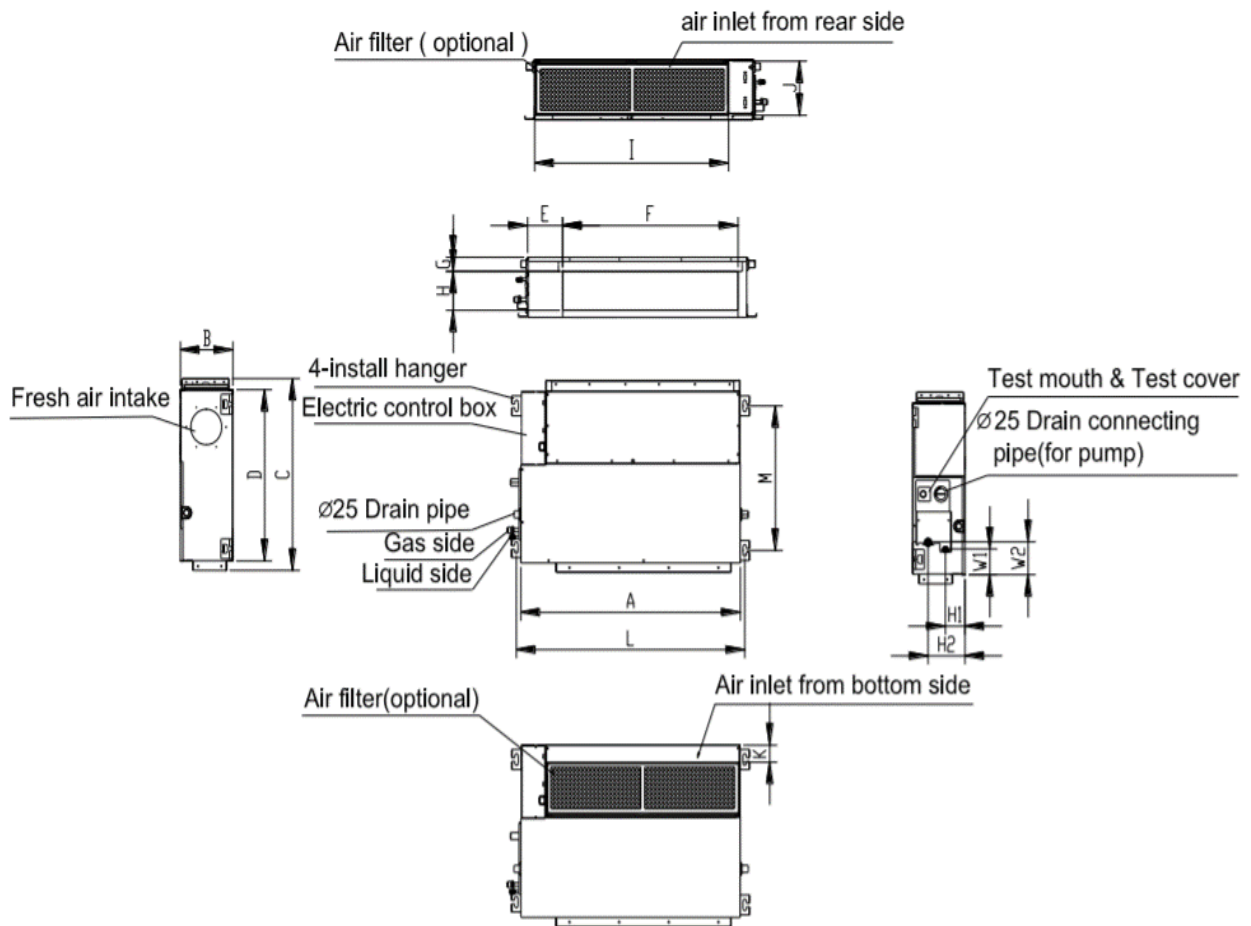
Job Name:

Schedule Reference:

Date:

Specification are subject to change without notice.

Outline and Physical Dimensions of LMHB18DFI



Model	A (mm/inch)	B (mm/inch)	C (mm/inch)	D (mm/inch)	E (mm/inch)	F (mm/inch)	G (mm/inch)	H (mm/inch)	I (mm/inch)
	880/34.6	210/8.3	674/26.5	600/23.6	140/5.5	706/27.8	50/2	136/5.4	782/30.8
LMHB18DFI	J (mm/inch)	K (mm/inch)	L (mm/inch)	M (mm/inch)	H1 (mm/inch)	H2 (mm/inch)	W1 (mm/inch)	W2 (mm/inch)	
	190/7.5	40/1.6	920/36.2	508/20	78/3.1	148/5.8	88/3.5	112/4.4	

