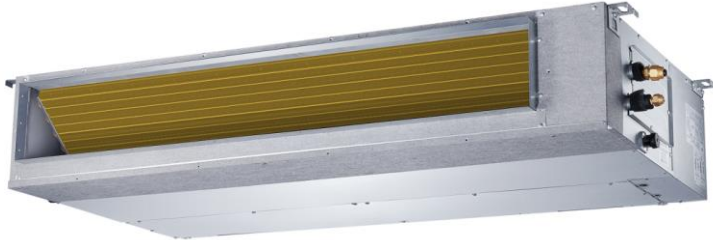


## MULTI SPLIT

## MULTI ZONE DUCT INDOOR UNIT

Model: LMHB24DFI



Item	Unit	Parameter
<b>Model</b>	—	<b>LMHB24DFI</b>
<b>Performance</b>		
Rated Cooling Capacity (Range)	Btu/h	24000(6500~27800)
EER	Btu/w	12.5
SEER	Btu/w	20.6
Rated Heating Capacity (Range)	Btu/h	24600(12200~32200)
COP	W/W	3.66
HSPF4	Btu/w	12.6
<b>Electrical Data</b>		
Normal Operational Voltage	V, Ph, Hz	208/230, 1, 60
Voltage Range	V	187-253
MCA	A	3
MOP	A	15
<b>Indoor fan motor</b>		
Type	—	Cross-Flow
Model	—	ZKFN-160-8-1-2
Qty	—	1
Input	W	90
Speed(Hi/Mi/Lo)	r/min	880/820/690
<b>Air flow &amp; Noise level</b>		
Indoor air flow (Hi/Med/Lo) (No duct)	CFM	1318.3/1178.2/739.3
Indoor noise level (Hi/Med/Lo)	dB(A)	44/40/35.5
<b>Dimension &amp; Weight</b>		
Dimension (W×D×H)	inch	43×30×10
	mm	1100×774×249
Packing(W×D×H)	inch	51×32×12.4
	mm	1305×805×315
Net/Gross weight	lbs.	90.39/105.82
	kg	41/48
<b>Others</b>		
Liquid side/ Gas side	inch	3/8" / 5/8"
	mm	9.52/15.9
Application area	sq.ft	344.44 ~ 505.90
	m2	32 ~ 47

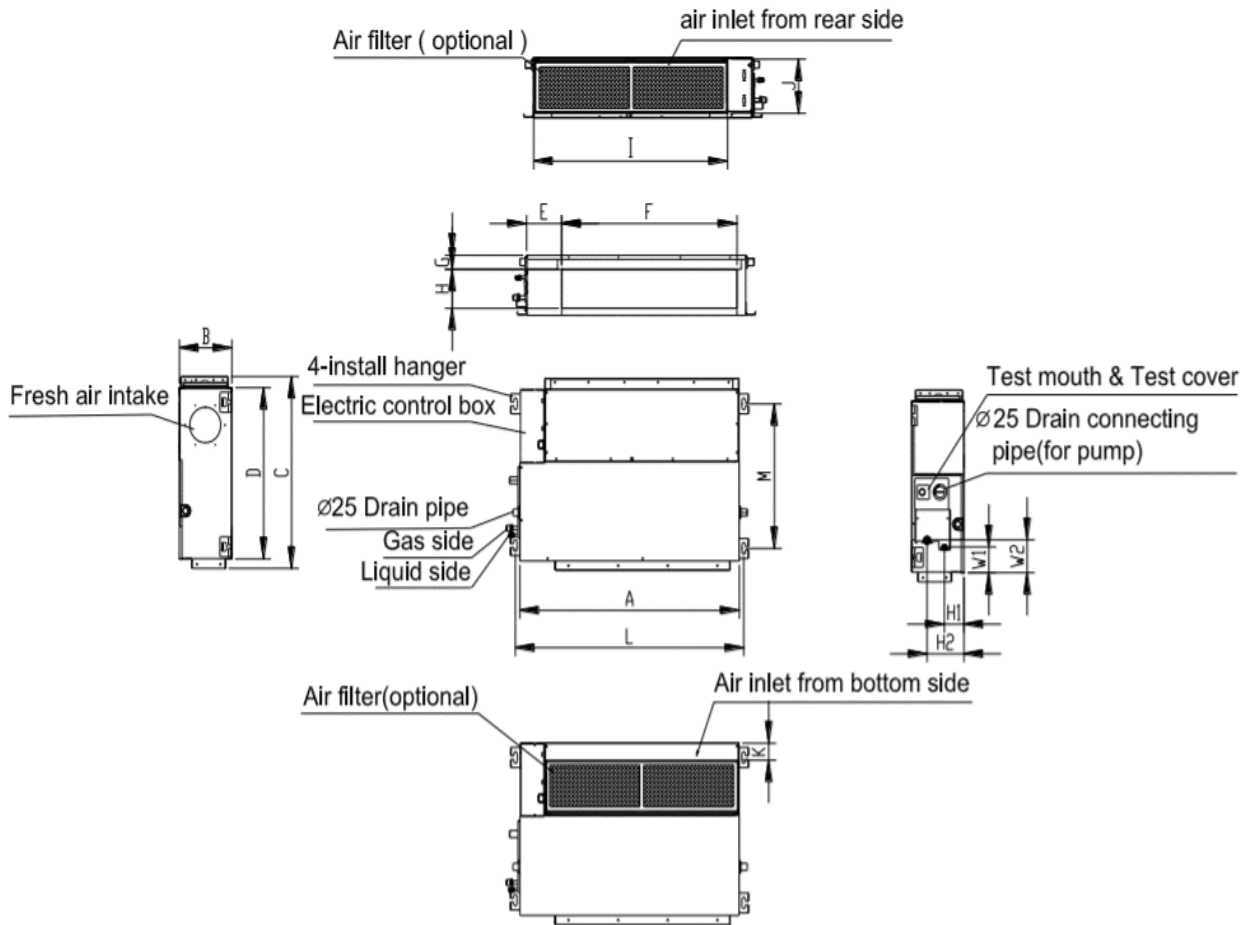
**Job Name:**

**Schedule Reference:**

**Date:**

Specification are subject to change without notice.

## Outline and Physical Dimensions of LMHB24DFI



Model	A (mm/inch)	B (mm/inch)	C (mm/inch)	D (mm/inch)	E (mm/inch)	F (mm/inch)	G (mm/inch)	H (mm/inch)	I (mm/inch)
	1100/43.3	249/9.8	774/30.5	700/27.6	140/5.5	926/36.5	50/2	175/6.9	1001/39.4
LMHB24DFI	J (mm/inch)	K (mm/inch)	L (mm/inch)	M (mm/inch)	H1 (mm/inch)	H2 (mm/inch)	W1 (mm/inch)	W2 (mm/inch)	
	228/9	5/0.2	1140/44.9	598/23.5	80/3.1	150/5.9	130/5.1	155/6.1	