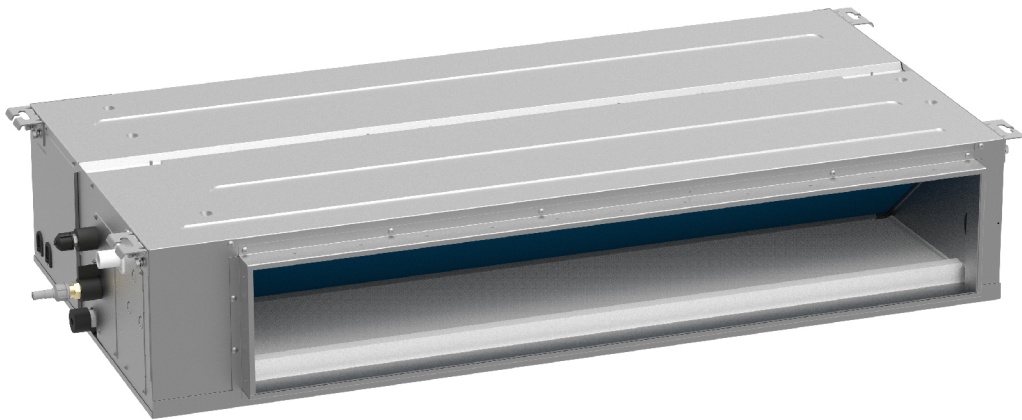


208~230V Medium ESP Fan Coil

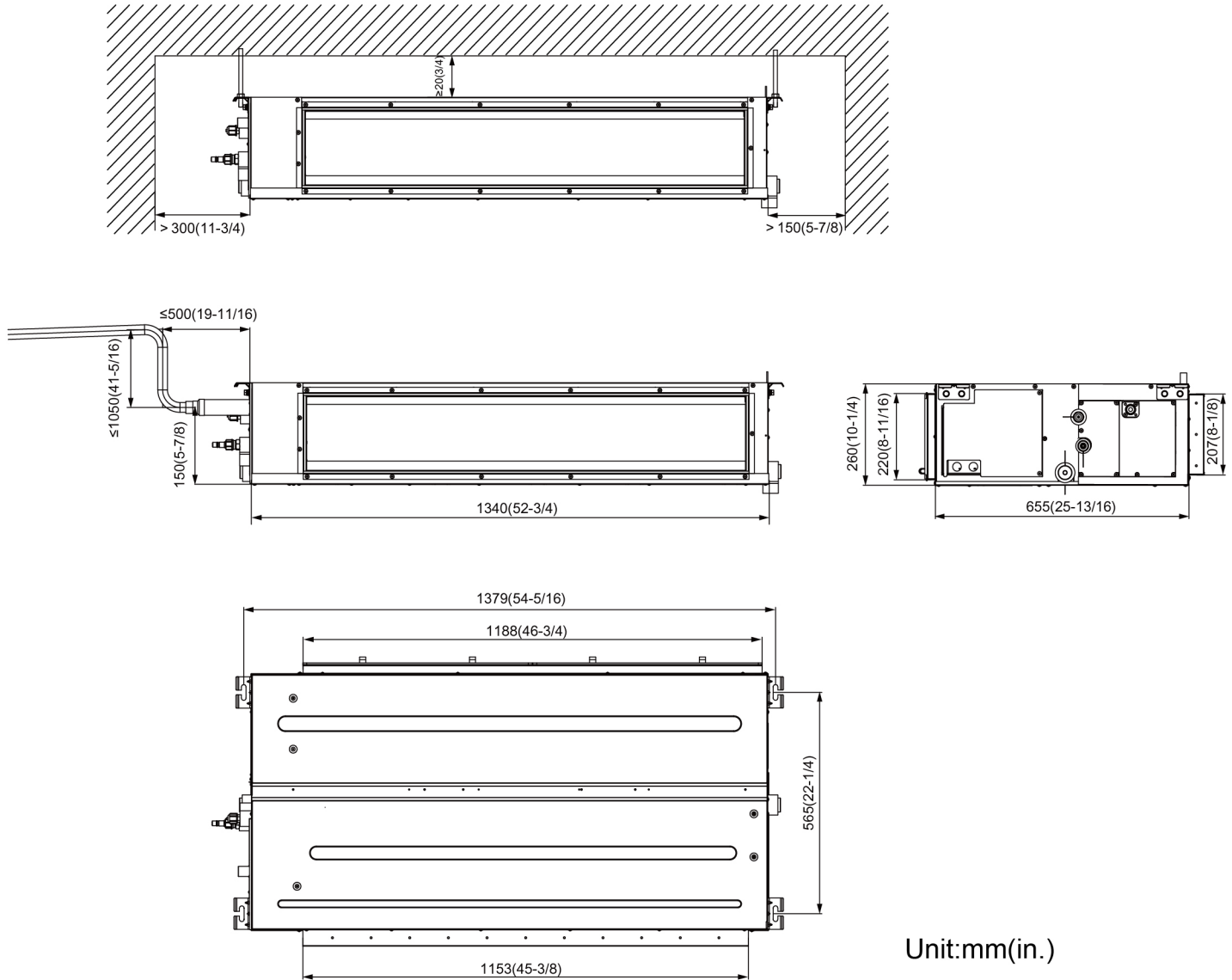
Model:GMV-ND42PLS/C-T(U)



Specifications	Unit	Parameter
Model	—	GMV-ND42PLS/C-T(U)
Performance		
Rated Cooling Capacity	kBtu/h	42
Rated Heating Capacity	kBtu/h	47
Sound Pressure Level	dB(A)	37/40/42
Electrical Data		
Power Supply	Voltage,Phase, Hertz	208/230, 1, 60
Maximum Overcurrent Protection (MOP)	A	15
Minimum Circuit Amps (MCA)	A	3
Fan		
Type x Quantity	—	Centrifugal x3
Air Flow Volume	CFM	825/1000/1180
ESP	In.W.G	0.2/0~0.32
Fan Motor Running Current	A	2.4
Fan Motor Power Output	W	150
Refrigerant Piping		
Connection Pipe	Gas(mm/inch)	Φ15.9/Φ5/8
	Liquid(mm/inch)	Φ9.52/Φ3/8
Connection method	—	Flare Connection
Refrigerant	—	R410A
Dimension/Weight		
Dimensions (H×W×D)	mm/inch	260x1340x655 (10 1/4x25 13/16x52 3/4)
Net Weight	kg/lbs	46.5/102
Other		
Safety Certification	—	ETL

Job Name:		Date:	
System Reference No.:			
Engineer Signature:			

Outline and Physical Dimensions of GMV-ND42PLS/C-T(U).



Unit:mm(in.)

